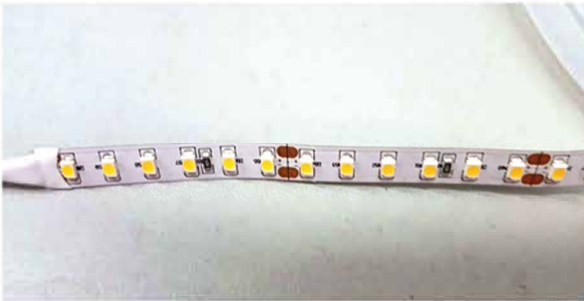


Specifications	
Model No.:	SL-SF120-2835A
LED:	120pcs SMD2835per meter
Lumen:	24-27LM/LEDs
LED CRI:	>80
LED Certification:	LM80
Color Temperature:	2800-3200K,4000~4500K,6000-6500K
INPUT:	DC12/24V
Power:	9.6W/m
Efficiency:	Avg 91LM/W
PCB Width:	8mm
PCB Thickness:	0.33 mm
Cooper	1OZ*2
IP Grade:	IP20; IP65 nano coating
Cable:	15cm 20AWG silicone cable or PVC cable on both side
Packing:	5m per roll. Each roll packed by aluminum anti static bag.
Package carton:	50roll/CTN
Quality Guarantee:	2years



Se pueden cortar
cada 3 diodos

